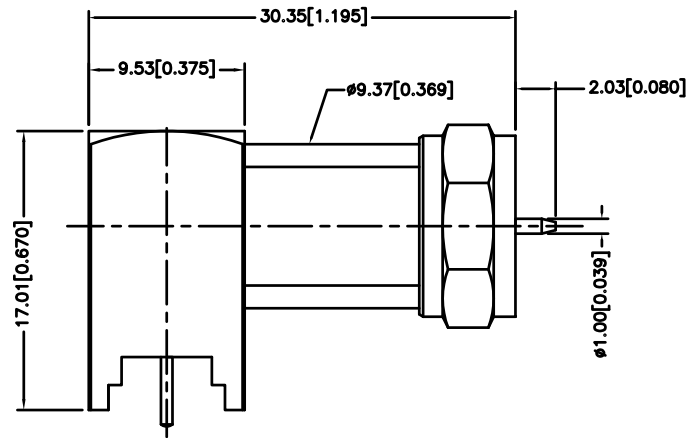
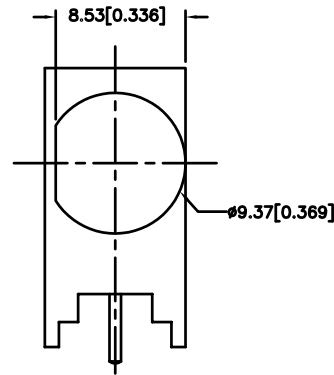


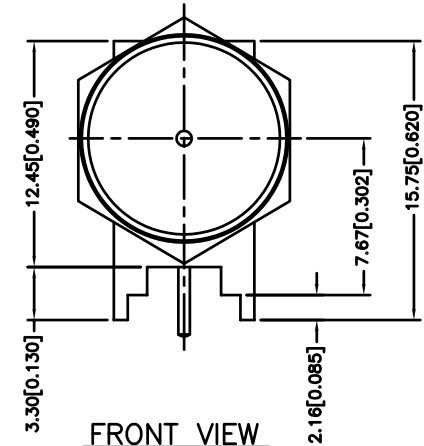
REV.	DATE	ECR NO	DESCRIPTION
A	09/15/10	--	RELEASE TO MFG.
B	11/22/10	2124	PLASTIC PLATE REMOVED



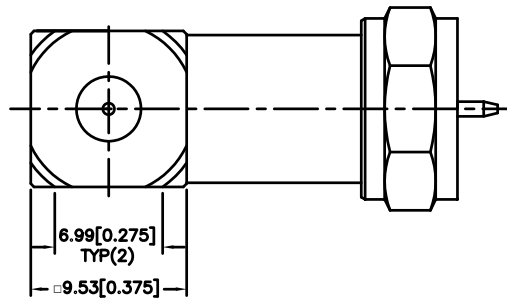
SIDE VIEW



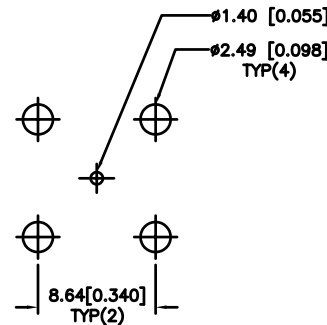
NECK VIEW



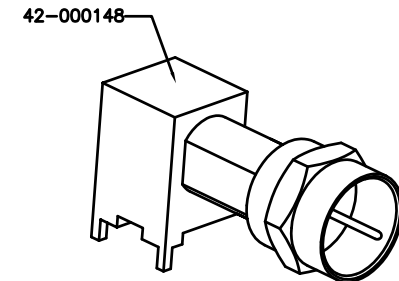
FRONT VIEW



BOTTOM VIEW



RECOMMENDED HOLE PATTERN



ISO VIEW

NOTES: FINISH (PLATING THICKNESS IN MICRO-INCHES)

					<div>UNLESS OTHERWISE SPECIFIED DIMENSIONS ARE IN MILLIMETERS. DIMENSIONS IN [] ARE IN INCHES AND FOR CUSTOMER REFERENCE ONLY.</div> <div>UNLESS OTHERWISE SPECIFIED TOLERANCES FOR MILLIMETERS ARE: 0.5 – 8mm ± 0.20mm 8 – 30mm ± 0.40mm 30 – 120mm ± 0.50mm</div> <div>UNLESS OTHERWISE SPECIFIED TOLERANCES FOR INCHES ARE: .020 – .315 = ± 0.007" .315 – 1.180 = ± 0.015" 1.180 – 4.724 = ± 0.020"</div> <div>DO NOT SCALE DRAWING</div>	APPROVALS		DATE		<div>Amphenol Connex</div>				
						DRAWN	CLEMENT	07/23/10						
						CHECKED								
						ISSUED			PART DESCRIPTION F R/A PCB RECEPTACLE PLUG					
						SHEET	1 OF 1							
4	CONTACT PIN	BRASS	BRIGHT TIN	1					PART NO. 222213					
3	INSULATOR	DELRIN	NATURAL	2										
2	COUPLING NUT	ZINK	NICKEL	1				DWG. NO. 222213.DWG						
1	BODY	BRASS	NICKEL	1										
	DESCRIPTION	MATERIAL	FINISH	QTY		C:/222/222213.DWG		REV.	B	SIZE	A	SCALE	NA	

Mouser Electronics

Authorized Distributor

Click to View Pricing, Inventory, Delivery & Lifecycle Information:

[Amphenol:](#)

[222213](#)